

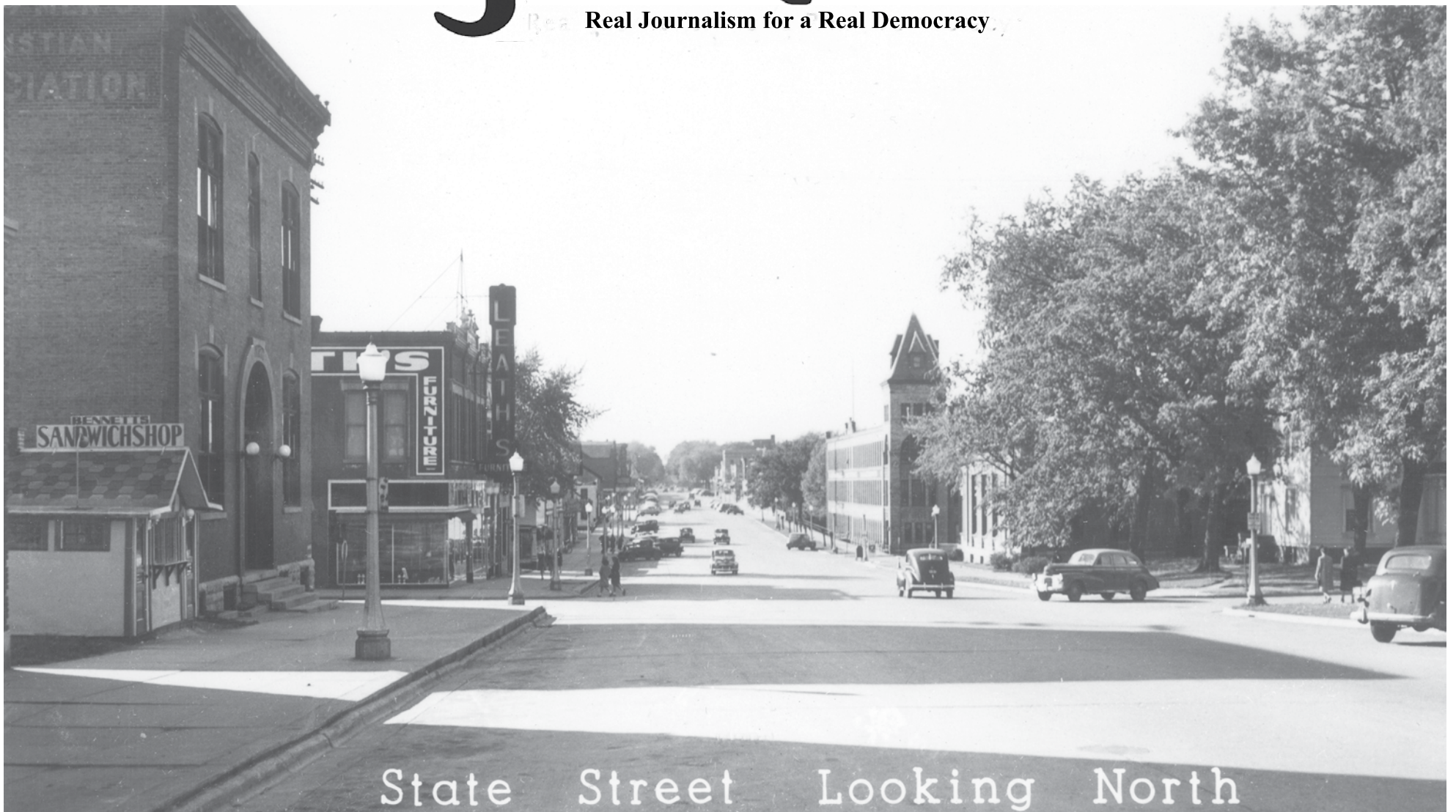
FREE

BOONE COUNTY
LOCAL NEWS, OPINION & HISTORY
JOURNAL
Real Journalism for a Real Democracy



Subscribe Online
www.boonecountyjournal.com

Friday • January 3, 2020
Vol. 24, Issue 37 • No. 1233



An Interesting Picture

by David Larson, Publisher

In 1950, C.J. “Doc” Wolf removed the house on the corner we see in this picture. It was where his family lived. He built a building on that lot, which became a Kroger grocery store. When Kroger moved from the community in the late 60’s, the building was rented to Harry O’Brien and Nels Dobbins, who ran the O’Brien and Dobbins Drug Store until the 90’s. In 1993, the drug store was sold to pharmacist Pat Donohoo, who ran it for an additional 23 years, using the O’Brien and Dobbins name. Times change.

The house on the right side of this photograph is at the corner of South State Street and East Locust Street. A car is pulling out onto State Street from East Locust Street, about to head south on State. There is no stoplight, stop sign or roundabout at that intersection. Who could complain about that... right? The streetlights look nice and seem to be a good match for the spindles decorating the bridge that was built in 1929 over the Kishwaukee River.

On the left is perhaps the most popular restaurant ever in Belvidere, Bennett’s Sandwich Shop. Originally opened by his father, Harold Bennett and his wife Alice ran the restaurant side-by-side during most of its time in business. Hamburgers, hot dogs with the works and homemade BBQ made from premium beef. Bennett’s would buy a premium steer and grind the whole of it into ground beef. Opening for morning coffee and known to stay open as late as 1 a.m. if the trade permitted, the Bennett’s had independence and security in the community.

The Bennetts rented a small spot on the YMCA property for their small, 2x4 shop. It had neither running water, nor electricity. Water was brought from home in milk cans and electricity by dropcord from the YMCA. Today, they would be shuttered by the Health Department and the Building Department!

Bennett’s was a co-sponsor of the 1949 Merchant-Farmers Free Corn Boil at the

Fairground, which is Spencer Park today. In case you have ever wondered, a 1969 newspaper article after Bennett’s closed revealed that their secret was a light sprinkle of onion salt.

Next to Bennett’s was the original YMCA building built in Belvidere in 1907. After sixty years, the building was replaced by the present building on Locust Street in 1967. When the present building was built 53 years ago, the city’s population was around 10,000. The building was built, by-and-large, by multiple donations from the community. An organizing committee was formed and dozens of local individuals went door-to-door, collecting pledge donations to build the building. If 60 years is the life cycle of a YMCA building, the time is getting close to be thinking about what comes next. Educating both mind and body keeps one healthy, wealthy and wise.

Looking at the cars, we imagine this photo was taken around 1941 on State Street in Belvidere. A few months later, Pearl Harbor changed everything. Orchard Place, a rural farming community, about 55 miles southeast of Belvidere and 17 miles northwest of Downtown Chicago, became a manifestation of the industrial might of the United States. A might that was as much brains as brawn. Orchard Place disappeared within a year and became the site of the Douglas Aircraft Manufacturing Plant and Airfield. After the war, the airfield was transformed into today’s O’Hare International Airport.

The airport, which serves Belvidere, is one of only five airports worldwide that has nonstop flights to all six inhabited continents. With the completion this year of the sixth parallel runway, the next phase of development is about to begin: A \$45 billion global terminal, whose architect is a former Belvidere resident and student of Belvidere High School.

Adding-up the recent infrastructure spending on Interstate 90, O’Hare, and the projects funded by the new gas tax, totals about \$85 billion, which is 12 percent of the United States’ military budget. That has big implications for Illinois,

and, in particular, Boone County, which is part of Northern Illinois’ growth corridor.

Education has become the economic engine of growth in the past 80 years. And if Boone County wants to prosper, it had better get its educational house in order: Only 1 in 4 third graders in Belvidere are reading at grade level. The situation is no better in the rest of Boone County. An allegedly simpler time has been replaced by an absolute need to become better educated or be resigned to accept increasingly lower standards of living.

Popular in some circles, attempts to live in the past and “Make America Great Again” are shallow fantasies. Jeep Cherokees, corn and other products are exported from Belvidere and sold globally. Boone County will only prosper by doing our best work and competing in the global marketplace of today. And, to succeed, Belvidere must also embrace--rather than polarize--the diversity found in our community.

Eighty years after this picture was taken, have you ever wondered what “Make America Great Again” means? Many politicians, including Richard Nixon and Ronald Reagan, have promised to deliver it. Adolph Hitler did the same in Germany.

Pictures that visually connect us to the past often carry the danger of stimulating unattainable goals and wishful thinking. Providing our children with a good education will be far more valuable in a future Illinois than indulging in the delusion of a utopian past. Our children will pay, and will not enjoy prosperity if they are not the beneficiaries of a good education that begins locally.

With a proper education, our children may be building airports or they might be working to protect our environment and climate. Or maybe just having a decent job that makes a better life affordable. A YMCA, an up-to-date library, and a quality, public education will provide the roots for a better life. How we provide them in Boone County as we enter a new decade is the challenge of 2020.

Happy New Year!

Community News & Events

All You Can Eat Fish Boil- Friday, January 3, 2020. Icelandic Cod with Butter, Chicken and Potatoes, Onions, Cole Slaw, Bread with butter, Dessert and Beverage. Serving from 5-8 P.M. and \$15 per person. Carry Outs Available. Located at Capron Lions Community Building, 1st Friday in January, February and March.

Winter Tree & Shrub Identification Workshop- Saturday, January 4, 2020, located at Nature at the Confluence (320 Dickop Street, South Beloit, IL). Go to www.NaturalLand.org for more details.

Community Building Complex Finance, Rules & Regulations and Building & Grounds Committee Meeting- Tuesday, January 7, 2020 at 11:45 a.m. at The Steam Plant Restaurant.

All-You-Can-Eat Pancake and Sausage Breakfast- Saturday, January 11, 2020 from 7:00 a.m. to 1:00 p.m. Located at the Capron Lions Community Building (at Capron Lions Park). Bring your used glasses, ink cartridges, hearing aids and cellphones to our collection box at the breakfast!

Timber Sales and Marketing- Join Illinois Extension Forestry Specialist Jay Hayek on Wednesday, January 15, 2020 from 1:30 p.m. to 4:30 p.m. for a Timber Sales and Marketing

program. The program will be held at the Elizabeth Community Building, HWY 20 W. Elizabeth, IL 61028. Pre-registration is required by January 13 and the cost of the program will be \$10 per person. To register, or for more information about the program, please call the Jo Daviess County Extension Office at 815-858-2273 or visit online at go.illinois.edu/jsw.

Community Building Complex Committee Regular Board Meeting- Thursday, January 16, 2020 at 5:00 p.m. in the Community Building Board Room.

Woodland Management for Wildlife, Timber, and Enjoyment- Join Illinois Extension for a seminar on Woodland Management for Wildlife, Timber, and Enjoyment on Thursday, January 16 from 9 a.m. to noon at the Elizabeth Community Building, HWY 20 W. Elizabeth, IL. There will be a \$10 charge to attend the seminar and pre-registration is required by Tuesday, January 14. To register or for more information please call the Jo Daviess County Extension Office at 815-858-2273 or visit us online at go.illinois.edu/jsw.

Vacancy Volunteer Boards of Boone County-

Term Expires	Length of Term
Boone County Sanitary District	
May 1, 2021	(3) Year Term
May 1, 2022	Remainder of Term
Conservation Easement & Farmland Protection	
June 1, 2022	(3) Year Term
Building Board of Appeals	
June 1, 2021	(5) Year Term
Zoning Board of Appeals	
June 1, 2024	(5) Year Term
June 1, 2021	Remainder of Term
Boone County Board of Health	
July 1, 2022	(3) Year Term
Ethics Commission	
June 30, 2020	(1) Year Term
Regional Planning Commission	
December 30, 2021	Remainder of Term
Capron Rescue Squad	
December 2nd Monday, 2022	(5) Year Term


Interested parties are asked to send a letter and/or resume expressing your interest and qualifications along with your contact information to Boone County Board Chairman Karl Johnson, Administration Campus, 1212 Logan Ave., Suite 102, Belvidere, IL 61008. Please respond by January 31, 2020 to assure being considered.

Obituaries

Baylander, Jenifer, 83, Cherry Valley, Dec. 25
 Bland, Barbara, 69, Belvidere, December 22
 Bottcher Payton, Shirley, 82, Tucson AZ, Dec. 19
 Gebhardt, Charles, 88, Belvidere, December 25
 Rivera, Isabel, 50, Belvidere, December 25
 Royal White, 63, Caledonia, December 29
 Schwebke, Jennie, 33, Poplar Grove, Dec. 30

Correction

Last week the *Journal* published a editorial from someone who does not work at the newspaper, an OP-ED. We failed to identify the author, Bob Evans of Rockford University.



real journalism for a real democracy

Publisher/Editor Senior Writer/Editorial Advertising Photography Office	David C. Larson Charles Herbst Bethany Staniec Susan Moran Amanda Nelson
---	--

David Grimm April 1938 - Dec. 2000
 Richelle Kingsbury Aug. 1955 - June 2013

THE BOONE COUNTY JOURNAL
 419 S. State St • Belvidere, IL 61008
 Phone: (815) 544-4430 Fax: 544-4330
www.boonecountyjournal.com
news@boonecountyjournal.com

Each week, the Journal seeks to present a variety of voices.
Letters. Every attempt will be made to print all letters received with the exception of those that are libelous or obscene. Letters should be signed and include an ID or phone number, so that we can contact the author prior to publication to verify authenticity.
Guest columns. Community leaders are encouraged to submit guest columns consistent with our editorial guidelines for possible inclusion in the Journal.
Opinions. The opinions expressed in the Journal are those of their authors and do not necessarily reflect the opinions of The Boone County Journal management or ownership.

ACKERSON DOOR

ads

SALES

"We give your garage closure"

• Sales • Doors • Openers • Replacement Sections
 • Service • Cables • Installations • Springs




2255 Rt. 173
Caledonia, IL 61011

Visit Our Showroom



815-623-2616
815-765-1551
Fax: 815-765-0333



GRANT MEYERS
BROKER

CENTURY 21

Affiliated

O: 815.397.7700
 C: 815.520.3515
 spine6@aol.com
www.Century21Affiliated.com
 7210 E State St
 Rockford, IL 61108

ROOM FOR RENT: Belvidere: Nice furnished room w/ fridge, near downtown, bus stop, Aldi, Drug & Dollar Stores. No Sec. Deposit. \$102/wk. or \$430/mo.
Call (815) 544-4466

For SALE: General Steel Pole Building, new, three sided, 22' W x 70' L x 20'8" H, Side single slope w/2:12 pitch. One 14'W x 14'H framed opening and one 10' W x 10'H framed opening with heavy duty doors. Asking \$29,000.
 Call 815-569-1571 for more information.



STIHL

• Landscape Mulches • Natural Landscape Stone
 • Unilock Pavers & Retaining Wall Systems
 • Top Soil / Compost Blend • Propane Filling Station
 • Lawn Mower & Outdoor Power Equipment,
 Repair & Service • Dealer for Scag, eXmark, Ferris & Husler Lawn Mowers • Weather Guard Truck Tool Boxes

7711 Newburg Road • Rockford, IL 61108
 815-977-5268 www.cherryvalleylandscape.com



Milos Dental Care
Dr. Jamie Lynn Milos

• 129 S. Phelps Ave. Suite 307, Rockford, IL 61108
 • (815) 315-4200
 • Call now for an appointment!!
 • www.milosdentalcare.com

Get instant cash for your GOLD



WE PAY HIGHEST PRICES

Belvidere Collectible Coins

880 Belvidere Rd.
 Belvidere, IL
 815-547-7111

**WE PAY 10%
 MORE THAN ANY
 OTHER OFFER!**

Visit us Online at www.goldsilverjewelrycoin.com

Boone County License & Title STICKERS

Bring:
 Postcard Bill from the Secretary of State
 Or
 Old Registration Card
 Or
 Vin# + Plate # + Expiration Date



419 S. State St. Bel
815-544-2075

OP ED

Most Downstate Schools Below Average, and It's Not Because of Spending

By Jim Nowlan

Different from Lake Wobegon, where all the youngsters are above average, most downstate Illinois schools perform below the statewide averages on achievement tests. I write not to criticize, but to evaluate, and to explore what might be done to boost achievement.

The Illinois School Report Card produced by the state's board of education offers a trove of information about our schools and their students. You can slice and dice the data on its website. What you will find is depressingly predictable: School district performance strongly correlates with household income, and not with spending. Since downstate communities are overall less wealthy than those in metro Chicago, performance is also, generally, less robust.

The sample of school districts I looked at across Illinois was consistent: Both downstate rural and urban school districts generally performed below the statewide averages for 11th grade language and math tests. The downstate exceptions were suburban-type districts on the edge of cities, as outside Peoria and Champaign-Urbana, where, let's be honest, many families locate to avoid the problems of city schools. Schools such as Dunlap (outside Peoria) and Mahomet (Champaign) spend less per pupil than their nearby city schools and perform much better.

The state Report Card includes fascinating scatterplots of all schools. You will see strong correlations between the percentage of low-income families in districts and performance; the fewer low income, the higher the test scores.

On the other hand, there is almost no correlation I can see in the scatterplot for spending and performance. The scatterplot resembles a goose egg, standing up.

That doesn't mean spending is unimportant. I am confident the many suburban schools that pay an average of more than \$100,000 per year for teachers are able to attract, overall, a greater percentage of teachers who earn master's degrees in substantive areas such as science, math and English than in school districts near my town, where average salaries are under \$50,000. The high-spending schools generally have larger enrollments as well, and thus offer more foreign languages, earlier, and a richer array of challenging coursework.

Yet I would guess that even if the suburban schools paid as little as my rural districts, their students would still perform much better than average — because the parents and peer pressure would demand it. Parents would create and fund foundations to provide what they think their children need to get into top colleges.

We in Illinois are at present embarked on a gradual increase in the state funding for low-wealth districts, which includes most rural districts, so long as state funding is available. I am all for this. Yet, if improved performance doesn't follow, taxpayers might say: "Why are we doing this?"

I don't fault my local school teachers for below average performance, but I do believe school superintendents and their boards must up their game. I fear the "supes" often caress their boards with cherry-picked information from the school district report cards, showing improvement here and there, yet ignoring that the schools are still performing below average. The school boards often think that if they are doing as well as the under-performing school district down the road, they are doing just fine. Not true.

Parents with ambitions for their young are not likely to locate in small towns where the schools are below average, and I can assure you such families check out the statewide school report cards.

Poor-performing schools bode ill for the future of rural America, and for all America.

The performance problems — I don't know why school leaders don't shout this to the high heaven, in their own frustration — lie primarily with the families and communities in which the schools are embedded. Low-income families often fail to create strong expectations for success among their children, nor do they provide the discipline and support at home necessary to achieve high aspirations.

So, what can be done? Schools in big city China require English from kindergarten through high school. If a rural district offered Mandarin from the earliest grades — and my Chinese friends believe such could be arranged — young parents would take notice, I can assure you. Yet I fear that most downstate school boards would consider that way too far outside the box, comfortable in their misguided belief that the U.S. is still the center of the world.

Schools are already providing breakfast, lunch and after-school snacks for the low-income. Should schools provide even more social services? I don't think schools can become in loco parentis (in place of parents), at least not effectively.

Yet, somehow, schools and communities — churches, private charity, neighborhood groups — must engage and stimulate clueless families to do a better job of parenting for success.

For many years, Jim Nowlan was a senior fellow and political science professor at the University of Illinois in Urbana-Champaign. He has worked for three unindicted governors and published a weekly newspaper in central Illinois.

New Year Will Bring A Higher Minimum Wage, Legalization of Marijuana

Hundreds of state laws take effect in January by Jerry Nowicki Capitol News Illinois

The state's minimum wage will increase by \$1 hourly, recreational marijuana will go on sale to those over 21 years of age, and some state taxes and licensing fees will increase when the calendar hits January.

The changes are among hundreds resulting from laws passed during a busy legislative session which adjourned in early June.

Minimum Wage: The minimum wage will increase by \$1 to \$9.25 hourly on Jan. 1, the first such increase since 2010. The wage will increase to \$10 hourly in July before increasing \$1 each January until it hits \$15 by 2025.

Marijuana Legalization: With the legalization of adult-use marijuana in the state, Illinois residents will be allowed to possess 30 grams of cannabis flower,

500 milligrams of a marijuana-infused product and five grams of cannabis concentrate. Non-residents can possess half those amounts.

Consumption of marijuana will still be banned in public places, however, unless a licensed marijuana facility or certain lounges obtain local government clearance for allowing use at their facilities.

Marijuana legalization will also provide for the expungement of low-level cannabis convictions and criminal records in the state, the first of which were filed in Chicago this month.

New Taxes, Fees for Capital Plan: Some new taxes and fees which will help fund a multi-year \$45 billion capital infrastructure plan will also take effect starting in January.

Registration fees for passenger vehicles will increase to \$151 from \$101, while electric vehicle registration fees will increase to \$251 annually from \$34 every other year.

The licensing fee for a trailer weighing less than 3,000 pounds will increase to \$118 from \$18, with every weight class above that also seeing a \$100 increase.

A new tax on parking garages will also take effect next month, with a 6 percent rate applied to hourly and daily garages and a 9 percent rate applied to monthly.

The state will also begin taxing the value of traded-in vehicles starting after \$10,000 of value, down from \$20,000.

Other New Laws

– The maximum fine for a hitting a construction worker with a vehicle will increase to \$25,000 from \$10,000.

– Those violating "Scott's Law" by failing to reduce speed or change lanes when an emergency vehicle is stopped on the side of the road will see increased fines in the new year as well. The minimum fine for a first offense will increase to \$250 from \$100, while the minimum for a second offense will be \$750.

Money collected from such violations will go to a Scott's Law Fund to produce driver education materials. The maximum fine will remain at \$10,000. The law also increases the severity of violations that result in the death or harm to a first responder to a class 2 felony.

– Passing a stopped school bus that has its "STOP" arm extended will now result in a \$300 fine, up from \$150 for the first offense. The second offense will cost drivers \$1,000, up from \$500.

– Public locations must convert single-occupancy restrooms into all-gender restrooms and designate them for use by no more than one person at a time, or for families or assisted use.

Continued on Page 8

Charles Herbst

Attorney At Law

Practice Areas:

- Wills and Trusts
- Tax Strategy
- IRS Representation
- Real Estate
- Wealth Planning
- LLCs and Corporate



Education:

- LL.M. (Masters in Tax Law) New York University
- B.S. Business, J.D. Law (cum laude) Indiana University

Experience:

- International Tax Associates, Director of Federal Tax Research
- Ernst and Young LLP, Manager; Writer, Washington National Tax Writing Center
- Private Practice in the local area for over 13 years
- Former chairman of the written publications committee of the Indiana State Bar Association.

Over 25 years of experience

With a comprehensive approach to tax management.

Licensed to practice before the Internal Revenue Service nationally and in state courts in Illinois.

345 Bienterra Trail, Suite 3, Rockford, IL 61107

815 484 9482

ANNUAL STATEMENT OF AFFAIRS SUMMARY FOR FISCAL YEAR ENDING JUNE 30, 2019

Copies of the detailed Annual Statement of Affairs for the Fiscal Year Ending June 30, 2019 will be available for public inspection in the school district/joint agreement administrative office by December 1, annually. Individuals wanting to review this Annual Statement of Affairs should contact:

North Boone CUSD 200 **6248 North Boone School Road Poplar Grove IL** **(815) 765-3322** **8am to 4pm**
 School District/Joint Agreement Name Address Telephone Office Hours

Also by January 15, annually the detailed Annual Statement of Affairs for the Fiscal Year Ending June 30, 2019, will be posted on the Illinois State Board of Education's website@ www.isbe.net. SUMMARY: The following is the Annual Statement of Affairs Summary that is required to be published by the school district/joint agreement for the past fiscal year. Statement of Operations as of June 30, 2019

	<u>Educational</u>	<u>Operations & Maintenance</u>	<u>Debt Services</u>	<u>Transportation</u>	<u>Municipal Retirement/ Social Security</u>	<u>Capital Projects</u>	<u>Working Cash</u>	<u>Tort</u>	<u>Fire Prevention & Safety</u>	
Local Sources	1000	7,946,650	1,244,261	3,074,083	845,984	844,335	426,514	76,493	224,065	59,012
Flow-Through Receipts/Revenues from One District to Another District	2000	0	0	0	0	0	0	0	0	0
State Sources	3000	7,218,182	335,189	0	631,954	0	0	0	0	0
Federal Sources	4000	935,982	0	0	0	0	0	0	0	0
Total Direct Receipts/Revenues		16,100,814	1,579,450	3,074,083	1,477,938	844,335	426,514	76,493	224,065	59,012
Total Direct Disbursements/Expenditures		14,351,777	1,616,911	3,390,820	1,608,048	625,243	560,768	201,243	199	0
Other Sources/Uses of Funds		0	0	0	0	0	0	0	0	0
Beginning Fund Balances - July 1, 2018		11,695,633	1,120,775	14,438,845	1,545,823	267,704	1,005,874	841,570	182,635	66,698
Other Changes in Fund Balances		0	0	0	0	0	0	0	0	0
Ending Fund Balances June 30, 2019		13,444,670	1,083,314	14,122,108	1,415,713	486,796	871,620	918,063	205,457	125,511

Gross Payment For Certifie Personnel

Salary Range: Less Than \$25,000	Maffei, Kelly Magyar, Ashley Anderson, Rhonda Baden, Andrew Barnette, Donna Beard, Amy Behling, Amy Belec, Ashley Bell, Kimberly Boswell, Lisa Bottcher, Brian Carlson, Garrett Cheek, Julia Chomko, Kaylea Clark, Paul Commons, Roxane Constant, Laura Crocker, Megan Davis, Kimberly Dornink, Jamie Franseen, Kristi Franz, Kathryn French, Sarah Gleasant, Trudi Grady, Paula Grove, Jill Hoffman, Dawn Howard, James Juhlin, Katherine Kaur, Jaspreet Kurczewski, Katelyn Lamb, Jacqueline Lenzen, Carrie Loner, Douglas Lupker, Kevin	Mahan, Kellie Maina, Lucinda Mccormack, Dale Mcdonald, Rhonda Miller, Michael Morrison, Charles Mueller, Sarah Nevsimal, Ricky Olsen, Ronald Printz, Renee Rago, Ian Randall, William Roberts, Susan Rudy, Kathryn Santiago, Allegra Schak, Kaitlyn Schuring, Timothy Schwartz, Kathy Smafield, Ann Spahr, Nancy Stinde, William Szeluga, Craig Taylor, Judith Vangeisen, Jennifer Velez, Amy Walker, Robert Wells, Julie Whitney, Kristin Wlodzimierski, Therese Salary Range: \$25,000 - \$39,999 Bobadilla-Gomez, Maria Boyce, Lauren	Brunk, Jessica Carlson, Samantha Chromczak, Georgianne Dreyer, Retha Grant, Laura Huseman, Dane Kohut, Jordan Nitz, Daniel Putnam, Keirsten Rolander, Dawn Schmidt, Leslie Streed, Sarah Salary Range: \$40,000 - \$59,999 Ahrens, Elaine Augustine, Nicholas Blackmer, Elizabeth Booth, Alexis Bowman, Kassandra Boyer, Ashley Brandt, Jami Brinkmeier, Matthew Conkling, Joshua Corn, Jeffrey Dinsmore, Deon Doering, Katharine Doetch, Beth Dunbar, Tammy Eaton, Shannon Engelman, Natalie Finley, Shane Ford, Melissa Franzen, Melissa Gerl, Kristalyn Giesecke, Rebecca	Gleizes, Mathilde Grace, Christy Greenfield, Randal Harbecke, Brandon Hart, Jalaine Hilton, Ashlee Jole, Krystal Kastning, Cynthia Kelley, Ryan Keppel, Lindsey Kiehl, Susan Laing, Megan Lammersfeld, Johnny Lerch, Linnea Lovgren, Tyler Mcfadden, Zena Mclee, Jason Mcwilliams, Emily Miller, Kristen Mortimer, Amanda Mouri, Emily Muck, Suzette Nilson, Megan Pagan, Carrie Parker, Sarah Phimmachack, Jenny Pienta, Joseph Podraza, Kathleen Pride, Heidi Protz, Matthew Rogers, Jodie Schabacker, Tracy Seipts, Dawn Shank, Christopher Smith, Jessica	Solomon, Kyle Stanek, Ashley Sterud, Hollie Stinde, Janet Surratt, Heidi Ullrich, Robert Velisek, Leah Weiffenbach, Carol Weiser, Terri Williams, Richard Willis, Codelyn Winebaugh, Julie Wykes, Emily Salary Range: 60,000 - \$89,999 Babcock, Christine Brady, Shawn Brody, Lynn Bussie, Denise Deyoung, Kenneth Doetch, Ashley Doetch, Tami Douglas, Stephanie Excell, Catherine Friesema, Kelly Geiger, Jason Gregory-Elms, Emily Grover, Wanda Guthrie, Amy Hanaman, Kelly Harkness, Shannon Hayden, Kristin Kamholz, Brenda Kleckler, Sandra Korpan, Sarah	Licausi, Lauren Lilja, Martha Louis, Allison Maten, Cindy Moon, Sandra Moran, Eileen Otoole, Tammy Parris, Susan Pearce, Jamison Peterson, Cheryl Roan, Renee Saveley, Elizabeth Scribner, Lisa Siggelkov, David Stachowiak, Kendra Stroup, Laura Sullivan, Aaron Taylor, Karin Townsend, Kellie Walsh, Heather Wesbecher, Michael Winebrenner, Michael Wineland, Lori Zimmer, Lisa Salary Range: \$90,000 And Over Geyman, Melissa Greenlee, Michael Hubert, Jacob Klett, Matthew Krawczyk, Kim Purvis, Dale
---	--	--	--	---	---	--

Gross Payment For Non-Certified Personnel

Salary Range: Less Than \$25,000	Dobbins, Stella Doetch, Lennie Alvarez, Jairo Anderson, Barbara Antis, Debra Antonsen, Julie Arata, Jill Armbrust, Melissa Atayde, Sarah Baden, Austin Baden, Tyler Baker, Robin Berglund, Carol Blazer, Carisa Boehmke, Robert Bohl, Diane Brooks, Vicki Brown, Mindy Brunschon, Robert Buntin, Coleen Burke, Bernard Burns, Elizabeth Cabrera, Tommy Caldwell, Karyn Christensen, Bobby Christensen, Lisa Chudoba, Laurie Cichon, Pasquina Conner, Courtney Cooke, Connie Corson, Tina Crocker, Toni Crull, Kimberly Cunningham, Jamie Dahl, Allison Derrickson, Matthew Dhamer, Lauren	Dobbs, Stella Doetch, Lennie Donley, Linda Eichholz, Melissa Esparza, Gerardo Estes, Kaela Ferguson, Michael Figueroa, Jamie Fleming, Sarah Fleming, Tim Foiles, James Ford, Glenda Ford, Robert Ford, Tyrone Freeman, Patrick Funk, Laura Garman, Kristi Geishert, Beth Giesecke, Cheryl Goodman, Jacquelyn Grider, Chad Grimm, Terry Havlovic, Michele Henning, Susan Hernandez, Bianca Hoffman, Ashleigh Hollis, Laurie Hribik, Tom Huff, Janis Huffman, Maggie Hyzer, Edward Istad, Sara Izzo, Shawn Jeffers, Dennis Johnson, Craig Johnson, Rick Johnston, Tara	Jones, Julie Joyce, Daniel Kasprak, Jodi Kehoe, Theresa Kilgore, Bobby Kosch, Courtney Krause, Jennifer Kuzia, Kathleen Leake, Anne Lee, David Lee, Deborah Lee, James Lee, Jodi Lee, Rita Lee, Tennille Lewandowski, Amanda Lewis, Penny Lindberg, Cheryl Livdahl, Amber Luth, Brett Malone, Ashley Mamer-Cox, Jason Mamer-Cox, Tiffany Marcus, Tracy Mcahren, Christine Mcfarlin, Rebekah Mcginness, Monica Mcneely, Kirstin Meggers, Nancy Meyer, Eugene Miller, Susan Mitchell, Tammy Morelock, Carrie Muehl, Jennifer Munro, Wendy Nachampassack, Melissa Nelson, Vicki	Nino, Christina Nolen, James Nolen, Traci Orr, Marlene Orsborn, Michael Osterberg, Kelly Paul, Celeste Perri, Dominic Peters, Gene Petersen, Nancy Peterson, Donna Phetteplace, Kim Pritchard, Debra Rabe, Alice Rabe, Candy Radke, Marilyn Randall, Lauren Reitz, Jennifer Richards, Laura Rivera, Evelyn Rogers, Taylor Rosenbalm, Robin Ruiz-Hernandez, Nayely Rutiaga, Evangelina Sachs, Margaret Saglier, Jannette Schaumburg, Elizabeth Schober-Worley, Theresa Schuster, Jeri Scott, Connie Secor, Julie Shook, Bridgette Slack, Michael Smith, Amanda Smith, Sandra Sorensen, Brittany Sowers, Andrea	Spana, Elaine Spence, Wendy Sremaniak, Donna St. Germain, Rita Stanski, Sonia Steffen, Susann Stickels, Toni Swope, Paulette Synove, Christina Thomas, Donna Tillou, Christine Timm, Sherry Von Bosse, Carol Vonderheide, Sharon Wagner, Christina Walter, Kimberly Webb, Melissa Welzen, Nancy Wethington, Edward Whiting, Brett Whiting, Melissa Wolski, Maria Yarc, Mathew Zumdahl, David Salary Range: \$25,000 - \$39,999 Alvarez, Stacey Bongiovanni, Cheryl Brosnan, Julie Cline, Sally Ellingson, Janet Embry, Jodie Guthrie, Steven Hill, Sandra Jenson, Laura Johnson, Michele Kammerer, Jeff	Lee, Ofelia Mckibben, Christine Meier, Russell Mendez, Francisco Mulholland, Linda Nino, Maria Peterson, Kaylee Piskie, Mary Plath, Jeannine Prince, Kathy Rush, Janice Schwarz, Zachery Williams, Randall Salary Range: \$40,000 - \$59,999 Burmeister, Janice Cline, David Gustafson, Kathleen Holsker, Kelly Jarquin, Alla Johnson, Craig Moore, Patricia O'malley, George Razim, William Richards, Robert Rodakowski, Sue Sager, Barbara Saunders, Julia Straw, Brad Timmerman, Ronald Whitt, James Zellner, Brenda Salary Range: \$60,000 And Over Krygier, Sarah Novak, James Porter, Randall Rudolph, Gerald
---	---	--	--	---	---	--

Payments Over \$2,500, Excluding Wages And Salaries.

Person, Firm, Or Corporation	Aggregate Amount	B & K Concrete	\$22,023.00	Capron Elementary	\$4,356.28
2Hb Solutions	\$3,450.00	Batteries Plus	\$3,916.56	Carmichael Construction Inc	\$5,885.47
A-Fire Extinguisher Sales	\$4,308.70	Bel Rock Asphalt Paving Inc	\$13,950.00	Centerpoint Energy Services, Inc.	\$12,298.00
Abby Pest Elimination Llc	\$7,250.00	Belvidere Park District	\$7,057.50	Chalk.com Education Inc.	\$2,646.00
Agile Sports Technologies DbA Hudl	\$2,899.00	Benchmark Flooring Inc	\$3,200.00	Great Lakes Coca-Cola Distribution	\$9,231.84
All Pro Truck & Trailer Repair Llc	\$18,181.15	Blue Ribbon Electrical Inc	\$17,342.76	College Entrance Examination Board	\$11,015.00
Alpha Baking Company	\$13,850.94	Boone County Shopper	\$3,694.50	Collins Sanitary	\$15,380.00
Aramark Uniform Services	\$11,153.07	Bound To Stay Bound Books, Inc	\$11,470.81	Comed	\$3,525.36
Arthur J. Gallagher Risk Management	\$7,844.00	Brainpop Llc	\$6,233.62	Comelec Services Inc	\$5,856.00
Athletico Management, Llc	\$23,658.75	Brecht's Database Solutions, Inc	\$6,628.55	Compugen Finance, Inc.	\$18,000.00
Audio Engineering Inc	\$3,305.00	Bsn Sports Llc	\$4,509.43	Computer Dynamics Of Nw II	\$16,543.23
Automatic Fire Systems	\$3,472.00	Bureau Of Edu & Research	\$4,804.00	Connor Co	\$5,769.10
Ayre Excavating Llc	\$2,610.51	Capital One Public Funding	\$10,783.00		

Corvus Industries Ltd	\$21,640.00	Interstate Batteries Of Rockford	\$2,888.65	Poblocki Sign Company Llc	\$13,516.00
Cotg	\$22,495.00	Illinois State Board Of Education	\$6,760.00	Pomp's Tire Service	\$4,212.64
Country Well & Pump Inc	\$17,864.00	Jack's Tire Sales & Service	\$10,371.66	Poplar Grove State Bank	\$15,000.00
Cpi	\$2,979.00	Jakes Electric Llc	\$3,089.37	Pro Com Systems	\$7,482.40
Culligan Of Belvidere	\$9,753.05	Jenny Phimmachack	\$3,258.36	Pro-Vision, Inc.	\$6,679.01
Current Technologies Corp	\$18,523.66	Joe Bohlman	\$5,040.20	Radi-Link	\$2,837.00
Dax Kirchhoff Decorating	\$3,300.00	Johnson Controls Inc	\$20,802.94	Regional Office Of Education	\$3,280.00
Dearborn Life	\$5,245.25	Johnstone Supply	\$4,282.47	Riddell/All American Sports Corp	\$10,616.29
Decker Inc	\$2,650.95	Kelley Williamson Company	\$2,568.52	Rk Dixon	\$6,598.96
Dell Marketing L.p.	\$3,048.00	Kids	\$2,680.00	Rudolph Masonry, Inc	\$16,165.00
Discovery Education, Inc	\$3,200.00	Klein Thorpe And Jenkins	\$8,068.30	Rush Power Systems, Llc	\$2,694.13
Diversified Benefit Services, Inc	\$21,773.46	Learning A-Z	\$4,495.05	Scholastic Inc	\$9,358.04
Dupage Radon Testing Inc.	\$3,660.00	Lonnies Carpet Max	\$4,426.66	School Specialty Inc	\$3,519.53
Ecra Group Inc	\$15,000.00	M.spinello & Sons Locks	\$14,886.05	Schoolology, Inc.	\$8,650.00
Edmentum	\$17,132.32	Macgill Co, William V	\$3,557.12	Seal Of Illinois	\$6,635.49
Ems Linq Inc.	\$3,490.00	Marengo Community School District	\$9,768.96	Sherwin-Williams Belvidere Store 32	\$5,828.78
Natalie Engelman	\$4,400.00	Mark D Olson Cpa Ltd	\$3,892.50	Sound Incorporated	\$20,072.24
Entre Computer Solutions	\$13,711.85	Mdc Environmental Services	\$7,856.94	Stalker Sports Floors	\$3,700.00
Equitable, Equi-Vest	\$5,545.00	Menards - Machesney Park	\$3,872.29	Sterling Commercial Roofing, Inc	\$3,144.00
Expertpay.com	\$10,307.20	Metlife	\$6,000.00	Stokes Decorating	\$3,300.00
First Northern Credit Union	\$4,200.00	N2y Inc	\$3,386.18	Success By Design	\$2,649.86
Fitzgerald Equipment	\$4,158.36	National Org For Treating Trauma	\$6,986.00	Team Fitz Graphics, Llc	\$5,420.00
Flinn Scientific	\$5,927.20	Ncs Pearson Inc	\$9,830.00	Telesolutions Consultants Llc	\$8,722.71
Follett School Solutions	\$11,680.31	Nicor Gas	\$20,027.53	Tierney	\$2,931.70
Forecast 5 Analytics, Inc	\$11,225.00	Noredink	\$10,800.00	Tobii Dynavox	\$3,882.00
Franczek Radelet	\$7,462.43	North Boone Cusd Flexible Spending	\$14,336.99	Twin Towers	\$5,109.25
Fraud Vendors	\$3,585.88	North Boone Cusd Imprest	\$14,135.84	Tyler Technologies, Inc	\$6,736.51
Frontline Technologies Group, Llc	\$10,077.13	North Boone Cusd Imprest Fund	\$9,447.03	United Laboratories	\$23,412.01
Goldstar Learning, Inc.	\$4,016.25	North Boone Ms Activity Acct	\$6,022.18	United Power & Battery	\$8,137.00
Gorenz And Associates, Ltd.	\$18,000.00	North Boone Upper Elementary	\$4,243.64	United States Postal Service	\$6,000.00
Michael Greenlee	\$2,866.05	Northwest Evaluation Assc.	\$12,700.00	Village Of Capron	\$4,855.18
Heartland Business Systems, Llc	\$9,939.00	Norwest Construction Inc	\$20,176.50	Village Of Poplar Grove	\$5,939.10
Heinemann	\$6,393.66	Optrics Inc.	\$3,186.00	Village Project Consulting Llc	\$3,000.00
High Standard Icemakers	\$4,639.42	Pdc Laboratories, Inc	\$9,837.50	Wards Science	\$3,908.84
Horace Mann Insurance Co.	\$2,750.00	Pearson Education	\$13,228.03	West Interactive Services Corp	\$3,000.00
Hsi Of Loves Park Llc	\$2,663.50	Physicians Immediate Care	\$4,295.00	Wisconsin Dept. Of Revenue	\$16,957.39
Iasb	\$6,318.00	Pitney Bowes Purchase Power	\$6,361.76	Woodstock Cusd 200	\$17,479.80
Illinois Principals Association	\$3,387.67	Play With A Purpose	\$8,619.75		

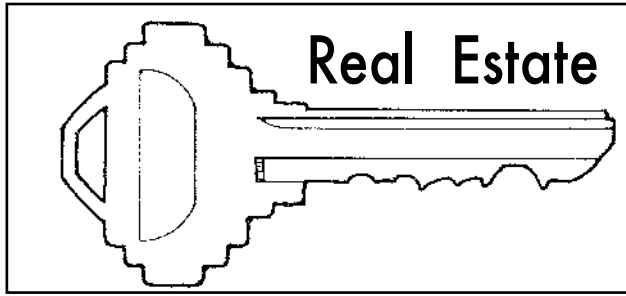
Payments Of \$1,000 To \$2,500, Excluding Wages And Salaries

Person, Firm, Or Corporation	Aggregate Amount	Firm Systems	\$2,385.00	North Boone High School Activity Ac	\$1,888.72
3P Learning Inc.	\$2,190.00	Food Equipment Liquidators	\$1,323.66	Notable Incorporated	\$1,200.00
Advance Auto Parts	\$2,211.89	Kelly Friesema	\$1,091.89	Ogle County Educational Cooperative	\$1,500.00
Hwstar Holdings Corp.	\$1,712.97	Melissa Geyman	\$1,580.21	Olsson Roofing Company, Inc	\$1,237.50
Aed Essentials	\$1,638.00	Gopher Sports	\$1,396.40	On-Target Sports Marketing, Ltd.	\$1,616.70
Alla Barkon	\$1,039.35	Grainger	\$2,446.62	Perfection Learning Coporation	\$1,876.05
Anderson Lock	\$1,644.55	Greggs Garage Inc	\$2,111.00	Porta Phone Company, Inc.	\$2,060.90
Auto Jet Muffler Corp	\$1,795.69	Guler Appliance Co	\$1,375.00	Primetime Audio/Video	\$1,149.00
Badger Sporting Goods Co., Inc.	\$1,068.50	Henry Schein, Inc	\$2,024.12	Putnam Retirement Plan Services	\$2,400.00
Barcol Door Company Inc	\$1,188.00	Howard Lee & Sons, Inc	\$1,830.80	Quill Corporation	\$2,227.36
Bars Flowers	\$1,025.95	Illinois Association Of School Business	\$1,610.00	Raising Student Achievement Confere	\$1,675.00
Bergen Telephone Co.	\$1,389.71	Illinois Dept Of Emplmty Security	\$1,448.49	Raymond Electronics	\$1,213.81
Big Northern Conference	\$2,081.19	Illinois Association Ffa	\$1,060.00	Gerald Rudolph	\$1,335.45
Bobcat Of Rockford	\$2,433.46	Jalaine Hart	\$1,324.70	Russ Johnson	\$1,010.00
Boombah, Inc	\$1,538.68	Johnson Controls Fire Protection Lp	\$1,605.40	Scholastic Book Clubs, Inc 7504	\$1,382.50
Boone County Journal	\$1,470.00	Jw Pepper	\$1,013.99	Schoolboard.net, Llc	\$1,888.00
Boone County Treasurer	\$1,951.82	Krueger International Inc	\$2,261.04	Schumacher Elevator Co	\$1,512.27
Bw Team Gear & Athletic Equip, Inc	\$2,146.46	Kully Supply Inc	\$1,690.47	Smart Signs Inc.	\$1,664.60
Byron High School	\$1,225.00	Lakeshore Learning Materials	\$2,479.68	Sprint Communications Company, Lp	\$1,446.04
Central Products Llc	\$1,383.95	Martha Lilja	\$1,361.36	Streamwood Behavioral Health System	\$1,750.00
Chapman And Cutler Llp	\$2,000.00	Mailfinance	\$1,272.00	Subway Of Poplar Grove	\$1,031.74
Cms Communications, Inc.	\$1,585.00	Mandarich Law Group, Llp	\$1,644.93	Swank Movie Licensing Usa	\$2,278.00
Committee For Children	\$2,175.00	Marcy Wilson	\$1,200.00	Teaching Strategies, Llc	\$1,317.00
Communication Without Limits, Inc	\$1,000.00	Marketrovlt, Llc	\$1,069.92	The Juice Plus+ Company, Llc	\$1,012.95
Cyber Acoustics	\$1,950.00	Mathilde Gleizes	\$1,800.00	Tractor Town	\$1,413.74
Demco	\$1,738.27	Mcgraw-Hill School Education, Llc	\$1,275.61	Tumbleweed Press Inc	\$1,500.00
Donald Bunjes	\$1,200.00	Mci Business	\$1,569.45	Unity School Bus Parts	\$1,305.65
Ebsco Industries, Inc	\$2,420.00	Menards- Cherry Valley	\$1,459.91	Veterans Floors Inc.	\$2,330.00
Edtechtteacher, Inc.	\$1,500.00	Mitylite Inc.	\$1,703.53	Worthington Direct	\$1,337.74
Eriksson Engineering Assoc., Ltd.	\$1,860.00	Suzette Muck	\$1,483.30	X-Pert Fit Custom Ltg. Solutions, I	\$1,058.12
Executive Plastering Co.	\$1,680.00	Neveco Inc.	\$1,650.36	Zaner-Bloser	\$1,006.40

Payments Of \$500 To \$999, Excluding Wages And Salaries.

Person, Firm, Or Corporation	Aggregate Amount	Cindy Maten	\$672.55	Unique Suites Hotel	\$577.20
Aaron Sullivan	\$665.10	Emily Mcwilliams	\$508.03	Assignment Hub	\$978.30
Amanda Mortimer	\$759.32	Media Resources, Inc	\$605.00	Vocabularyspellingcity.com	\$696.60
Balsley Printing	\$710.44	Melissa Eichholz	\$666.64	Voyager Sopris Learning	\$699.00
Barry Ts Modernistic Engraver	\$670.64	Mka Environmental Consulting, Inc	\$950.00	West Michigan Warehouse Outfitters,Inc.	\$585.00
Baudville	\$723.61	Nassp	\$960.00	Wilson Electric Co	\$737.34
Beaver Creek Golf Course	\$850.00	Neopost Usa Inc	\$525.96	Xpert Fit Customized	\$969.54
Ben Doetch	\$930.00	Neurobehavioral Consultants Llc	\$650.00	Zeman, Dave	\$519.50
Big Teams Llc/Schedule Star Llc	\$995.00	Niipc	\$600.00		
Boone County Sheriff	\$525.00	Megan Nilson	\$600.00		
Lynn Brody	\$600.00	North Park Rental	\$600.95		
Janice Burmeister	\$738.04	Northern Illinois Football Conference	\$650.00		
Cardinal Glass Company	\$895.00	Oregon High School	\$965.00		
Carolina Biological Supply Co.	\$822.39	Person, Scott	\$575.00		
Christal Pierce-Morgan	\$612.00	Pitney Bowes Global Financial Svcs	\$732.00		
Joshua Conkling	\$624.92	Poplar Grove Activity Fund	\$827.25		
Countryside Markets	\$533.98	Poplar Grove Pro Hardware	\$622.41		
Creative Fence	\$520.00	Port-A-John Staseline Svc Co	\$908.00		
Daniels Fuel & Tire	\$684.59	Prairiecat	\$845.00		
Deluxe	\$836.42	Prosign Design, Llc	\$812.00		
Tami Doetch	\$903.63	Raynor Door Authority	\$913.50		
Duraco Specialty Tapes, Llc	\$918.37	Read Naturally Inc	\$536.10		
Educational Resource Services, Inc.	\$762.00	Regional Learning Academy Of Rockford	\$930.00		
Evan Timmerman	\$595.47	Regional Office Of Education #47	\$651.00		
Firefly Computers, Llc	\$897.00	Richard Williams	\$649.89		
Gene Meyer	\$500.00	Rochester 100 Inc	\$922.50		
Herff Jones	\$828.12	Scholastic Reading Club	\$639.76		
Hinshaw & Culbertson Llp	\$625.00	School Outfitters	\$829.82		
Home2 Suites By Hilton Joliet	\$711.33	Schoollabels.com Inc.	\$741.00		
Igsma Dist 4	\$526.00	Sdm Gym Solutions, Llc	\$850.00		
Ihls-Oclc (Libraries System)	\$763.97	Shank, Chris	\$500.00		
Il Elementary School Association	\$515.00	Super Duper Publications	\$547.31		
Illinois Alliance Of Admin Spec Ed	\$960.00	Susan Kiehl	\$686.51		
Illinois School Services	\$520.00	Talx Uc Express	\$877.97		
Institute For Educational Dvlpmnt	\$518.00	Teachers Discovery	\$682.18		
Jamie Figueroa	\$500.00	Technology Plus, Llc	\$675.56		
Jessica Haselhorst	\$660.00	The Center/Irc	\$710.00		
Jones School Supply Co, Inc	\$593.22	Tom Harmer Athletic Equipment Inc.	\$961.28		
Julie Anderson	\$546.81	Town Square Publications	\$595.00		
Lakeside International Llc	\$770.84	Troy Doetch	\$595.00		
Linell Monson-Lasswell, Ed.d.	\$500.00	Tulio M. Otero, Ph.d.	\$650.00		





IN THE CIRCUIT COURT OF THE 17TH JUDICIAL CIRCUIT
COUNTY OF BOONE - BELVIDERE, ILLINOIS
PNC BANK NATIONAL ASSOCIATION; Plaintiff,
vs. 18 CH 97
ROSEMARY C. JACOBS; ILLINOIS HOUSING DEVELOPMENT
AUTHORITY; UNKNOWN OWNERS AND NON
RECORD CLAIMANTS; Defendants,

NOTICE OF SALE
PUBLIC NOTICE IS hereby given that pursuant to a Judgment of
Foreclosure entered in the above entitled cause Intercounty Judicial Sales
Corporation will on Thursday, February 6, 2020, at the hour of 12:15 p.m.
in inside the front entrance of the, Boone County Courthouse, 601 North
Main Street., Belvidere, Illinois 61008, sell to the highest bidder for cash,
the following described mortgaged real estate:

P.I.N. 05-26-289-002-0000.
Commonly known as 403 E. Madison St., Belvidere, IL 61008.
The improvement on the property consists of a single family
residence. If the subject mortgaged real estate is a unit of a common
interest community, the purchaser of the unit other than a mortgagee shall
pay the assessments required by subsection (g-1) of Section 18.5 of the
Condominium Property Act.

Sale terms: 10% down by certified funds, balance within 24 hours, by
certified funds. No refunds. The property will NOT be open for inspection.
For information call Ms. Kimberly S. Reid at Plaintiff's Attorney,
Marinosci Law Group, PC, 134 North LaSalle Street, Chicago, Illinois
60602. (312) 940-8580.
13141369
Published in The Boone County Journal Jan 3, 10, 17, 2020

IN THE CIRCUIT COURT OF THE
SEVENTEENTH JUDICIAL CIRCUIT
BOONE COUNTY, ILLINOIS
WELLS FARGO USA HOLDINGS, INC. Plaintiff,
-v.- 19 CH 100
JAMES K. BAKER A/K/A JAMES BAKER, WENDI J. BAKER A/K/A
WENDI BAKER A/K/A WENDI OSTWALD Defendant

NOTICE OF SALE
PUBLIC NOTICE IS HEREBY GIVEN that pursuant to a Judgment of
Foreclosure and Sale entered in the above cause on December 10, 2019,
an agent for The Judicial Sales Corporation, will at 1:00 PM on January
16, 2020, at the NLT Title L.L.C, 530 S. State, Suite 201 (Logan Avenue
entrance), Belvidere, IL, 61008, sell at a public sale to the highest bidder,
as set forth below, the following described real estate:

Commonly known as 2212 RIDGFIELD DRIVE, BELVIDERE, IL
61008
Property Index No. 06-31-327-014
The real estate is improved with a single family residence.
The judgment amount was \$235,607.45.

Sale terms: 25% down of the highest bid by certified funds at the close
of the sale payable to The Judicial Sales Corporation. No third party
checks will be accepted. The balance, including the Judicial Sale fee for
the Abandoned Residential Property Municipality Relief Fund, which is
calculated on residential real estate at the rate of \$1 for each \$1,000 or
fraction thereof of the amount paid by the purchaser not to exceed \$300,
in certified funds/or wire transfer, is due within twenty-four (24) hours.
No fee shall be paid by the mortgagee acquiring the residential real estate
pursuant to its credit bid at the sale or by any mortgagee, judgment creditor,
or other lienor acquiring the residential real estate whose rights in and
to the residential real estate arose prior to the sale. The subject property is
subject to general real estate taxes, special assessments, or special taxes
levied against said real estate and is offered for sale without any repre-
sentation as to quality or quantity of title and without recourse to Plaintiff
and in "AS IS" condition. The sale is further subject to confirmation by
the court.

Upon payment in full of the amount bid, the purchaser will receive a
Certificate of Sale that will entitle the purchaser to a deed to the real estate
after confirmation of the sale.
The property will NOT be open for inspection and plaintiff makes no
representation as to the condition of the property. Prospective bidders are
admonished to check the court file to verify all information.

If this property is a condominium unit, the purchaser of the unit at
the foreclosure sale, other than a mortgagee, shall pay the assessments and
the legal fees required by The Condominium Property Act, 765 ILCS
605/9(g)(1) and (g)(4). If this property is a condominium unit which is
part of a common interest community, the purchaser of the unit at the
foreclosure sale other than a mortgagee shall pay the assessments required
by The Condominium Property Act, 765 ILCS 605/18.5(g-1).

IF YOU ARE THE MORTGAGOR (HOMEOWNER), YOU HAVE
THE RIGHT TO REMAIN IN POSSESSION FOR 30 DAYS AFTER
ENTRY OF AN ORDER OF POSSESSION, IN ACCORDANCE WITH
SECTION 15-1701(C) OF THE ILLINOIS MORTGAGE FORECLO-
SURE LAW.

You will need a photo identification issued by a government agency
(driver's license, passport, etc.) in order to gain entry into our building
and the foreclosure sale room in Cook County and the same identification
for sales held at other county venues where The Judicial Sales Corpora-
tion conducts foreclosure sales.

For information, The sales clerk, SHAPIRO KREISMAN & ASSOCI-
ATES, LLC Plaintiff's Attorneys, 2121 WAUKEGAN RD., SUITE 301,
Bannockburn, IL, 60015 (847) 291-1717 For information call between the
hours of 1pm - 3pm. Please refer to file number 19-091235.

THE JUDICIAL SALES CORPORATION
One South Wacker Drive, 24th Floor, Chicago, IL 60606-4650 (312)
236-SALE

You can also visit The Judicial Sales Corporation at www.tjsc.com for
a 7 day status report of pending sales.

SHAPIRO KREISMAN & ASSOCIATES, LLC
2121 WAUKEGAN RD., SUITE 301
Bannockburn IL, 60015
847-291-1717
E-Mail: ILNotices@logs.com
Attorney File No. 19-091235
Case Number: 19 CH 100
TJSC#: 39-7881

NOTE: Pursuant to the Fair Debt Collection Practices Act, you are
advised that Plaintiff's attorney is deemed to be a debt collector attempt-
ing to collect a debt and any information obtained will be used for that
purpose.
Published in *The Boone County Journal* Dec 20, 27 Jan 3

IN THE CIRCUIT COURT OF THE
SEVENTEENTH JUDICIAL CIRCUIT
BOONE COUNTY, ILLINOIS
BANK OF AMERICA, N.A., Plaintiff,
-v.- 18 CH 57
JOSEPH M. KRIEGL, LISA J. KRIEGL, Defendant

NOTICE OF SALE
PUBLIC NOTICE IS HEREBY GIVEN that pursuant to a Judgment of
Foreclosure and Sale entered in the above cause on November 20, 2018,
an agent for The Judicial Sales Corporation, will at 1:00 PM on January
16, 2020, at the NLT Title L.L.C, 530 S. State, Suite 201 (Logan Avenue
entrance), Belvidere, IL, 61008, sell at a public sale to the highest bidder,
as set forth below, the following described real estate:

Property Index No. 05-26-401-008
The real estate is improved with a single family residence.

The judgment amount was \$142,675.98.
Sale terms: 25% down of the highest bid by certified funds at the close
of the sale payable to The Judicial Sales Corporation. No third party
checks will be accepted. The balance, including the Judicial Sale fee for
the Abandoned Residential Property Municipality Relief Fund, which is
calculated on residential real estate at the rate of \$1 for each \$1,000 or
fraction thereof of the amount paid by the purchaser not to exceed \$300,
in certified funds/or wire transfer, is due within twenty-four (24) hours.
No fee shall be paid by the mortgagee acquiring the residential real estate
pursuant to its credit bid at the sale or by any mortgagee, judgment creditor,
or other lienor acquiring the residential real estate whose rights in and
to the residential real estate arose prior to the sale. The subject property is
subject to general real estate taxes, special assessments, or special taxes
levied against said real estate and is offered for sale without any repre-
sentation as to quality or quantity of title and without recourse to Plaintiff
and in "AS IS" condition. The sale is further subject to confirmation by
the court.

Upon payment in full of the amount bid, the purchaser will receive a
Certificate of Sale that will entitle the purchaser to a deed to the real estate
after confirmation of the sale.
The property will NOT be open for inspection and plaintiff makes no
representation as to the condition of the property. Prospective bidders are
admonished to check the court file to verify all information.

If this property is a condominium unit, the purchaser of the unit at
the foreclosure sale, other than a mortgagee, shall pay the assessments and
the legal fees required by The Condominium Property Act, 765 ILCS
605/9(g)(1) and (g)(4). If this property is a condominium unit which is
part of a common interest community, the purchaser of the unit at the
foreclosure sale other than a mortgagee shall pay the assessments required
by The Condominium Property Act, 765 ILCS 605/18.5(g-1).

IF YOU ARE THE MORTGAGOR (HOMEOWNER), YOU HAVE
THE RIGHT TO REMAIN IN POSSESSION FOR 30 DAYS AFTER
ENTRY OF AN ORDER OF POSSESSION, IN ACCORDANCE WITH
SECTION 15-1701(C) OF THE ILLINOIS MORTGAGE FORECLO-
SURE LAW.

You will need a photo identification issued by a government agency
(driver's license, passport, etc.) in order to gain entry into our building
and the foreclosure sale room in Cook County and the same identification
for sales held at other county venues where The Judicial Sales Corpora-
tion conducts foreclosure sales.

For information, The sales clerk, SHAPIRO KREISMAN & ASSOCI-
ATES, LLC Plaintiff's Attorneys, 2121 WAUKEGAN RD., SUITE 301,
Bannockburn, IL, 60015 (847) 291-1717 For information call between the
hours of 1pm - 3pm. Please refer to file number 18-086575.

THE JUDICIAL SALES CORPORATION
One South Wacker Drive, 24th Floor, Chicago, IL 60606-4650 (312)
236-SALE

You can also visit The Judicial Sales Corporation at www.tjsc.com for
a 7 day status report of pending sales.

SHAPIRO KREISMAN & ASSOCIATES, LLC
2121 WAUKEGAN RD., SUITE 301
Bannockburn IL, 60015
847-291-1717
E-Mail: ILNotices@logs.com
Attorney File No. 18-086575
Case Number: 18 CH 57
TJSC#: 39-7879

NOTE: Pursuant to the Fair Debt Collection Practices Act, you are
advised that Plaintiff's attorney is deemed to be a debt collector attempt-
ing to collect a debt and any information obtained will be used for that
purpose.
Published in *The Boone County Journal* Dec 20, 27 Jan 3

LEGAL NOTICES Foreclosures

IN THE CIRCUIT COURT OF THE 17TH JUDICIAL CIRCUIT
COUNTY OF BOONE - BELVIDERE, ILLINOIS
PNC BANK NATIONAL ASSOCIATION; Plaintiff,
vs. 18 CH 97
ROSEMARY C. JACOBS; ILLINOIS HOUSING DEVELOPMENT
AUTHORITY; UNKNOWN OWNERS AND NON
RECORD CLAIMANTS; Defendants,

NOTICE OF SALE
PUBLIC NOTICE IS hereby given that pursuant to a Judgment of
Foreclosure entered in the above entitled cause Intercounty Judicial Sales
Corporation will on Thursday, February 6, 2020, at the hour of 12:15 p.m.
in inside the front entrance of the, Boone County Courthouse, 601 North
Main Street., Belvidere, Illinois 61008, sell to the highest bidder for cash,
the following described mortgaged real estate:

THE NORTHWESTERLY FIFTY-FIVE (55) FEET OF LOT FOUR
(4) IN BLOCK 19 (19) IN THE ORIGINAL TOWN OF BELVIDERE,
AS PLATTED AND RECORDED IN THE RECORDER'S OFFICE OF
BOONE COUNTY, ILLINOIS, SAID TRACT HAVING FRONTAGE
OF 55 FEET ON THE SOUTHERLY LINE OF EAST MADISON
STREET AND EXTENDING BACK OF THE SAME WIDTH THE
WHOLE DEPTH OF SAID LOT, THAT IS 66 FEET, SITUATED IN
THE COUNTY OF BOONE AND STATE OF ILLINOIS.

P.I.N. 05-26-289-002-0000.
Commonly known as 403 E. Madison St., Belvidere, IL 61008.
The improvement on the property consists of a single family
residence. If the subject mortgaged real estate is a unit of a common
interest community, the purchaser of the unit other than a mortgagee shall
pay the assessments required by subsection (g-1) of Section 18.5 of the
Condominium Property Act.

Sale terms: 10% down by certified funds, balance within 24 hours,
by certified funds. No refunds. The property will NOT be open for
inspection.

For information call Ms. Kimberly S. Reid at Plaintiff's Attorney,
Marinosci Law Group, PC, 134 North LaSalle Street, Chicago, Illinois
60602. (312) 940-8580.
13141369
Published in The Boone County Journal Jan 3, 10, 17, 2020

IN THE CIRCUIT COURT OF THE
SEVENTEENTH JUDICIAL CIRCUIT
BOONE COUNTY, ILLINOIS
WELLS FARGO USA HOLDINGS, INC. Plaintiff,
-v.- 19 CH 100
JAMES K. BAKER A/K/A JAMES BAKER, WENDI J. BAKER A/K/A
WENDI BAKER A/K/A WENDI OSTWALD Defendant

NOTICE OF SALE
PUBLIC NOTICE IS HEREBY GIVEN that pursuant to a Judgment of
Foreclosure and Sale entered in the above cause on December 10,
2019, an agent for The Judicial Sales Corporation, will at 1:00 PM on
January 16, 2020, at the NLT Title L.L.C, 530 S. State, Suite 201 (Logan
Avenue entrance), Belvidere, IL, 61008, sell at a public sale to the highest
bidder, as set forth below, the following described real estate:

LOT ONE HUNDRED FIVE (105) AS DESIGNATED UPON THE
PLAT OF FARMINGTON SUBDIVISION, PHASE 4, BEING A SUB-
DIVISION OF PART OF THE SOUTHWEST AND SOUTHEAST
QUARTERS (1/4) OF SECTION 31, TOWNSHIP 44 NORTH, RANGE
4 EAST OF THE THIRD PRINCIPAL MERIDIAN, ACCORDING TO
THE PLAT THEREOF RECORDED IN THE RECORDER'S OFFICE
OF BOONE COUNTY, ILLINOIS ON NOVEMBER 25, 1996 IN PLAT
INDEX ENVELOPE 174-A AS DOCUMENT NUMBER 96-8213; SITU-
ATED IN THE COUNTY OF BOONE AND THE STATE OF ILLI-
NOIS.

Commonly known as 2212 RIDGFIELD DRIVE, BELVIDERE, IL
61008
Property Index No. 06-31-327-014
The real estate is improved with a single family residence.

The judgment amount was \$235,607.45.
Sale terms: 25% down of the highest bid by certified funds at the close
of the sale payable to The Judicial Sales Corporation. No third party
checks will be accepted. The balance, including the Judicial Sale fee for
the Abandoned Residential Property Municipality Relief Fund, which is
calculated on residential real estate at the rate of \$1 for each \$1,000 or
fraction thereof of the amount paid by the purchaser not to exceed \$300,
in certified funds/or wire transfer, is due within twenty-four (24) hours.
No fee shall be paid by the mortgagee acquiring the residential real estate
pursuant to its credit bid at the sale or by any mortgagee, judgment creditor,
or other lienor acquiring the residential real estate whose rights in and
to the residential real estate arose prior to the sale. The subject property is
subject to general real estate taxes, special assessments, or special taxes
levied against said real estate and is offered for sale without any repre-
sentation as to quality or quantity of title and without recourse to Plaintiff
and in "AS IS" condition. The sale is further subject to confirmation by
the court.

Upon payment in full of the amount bid, the purchaser will receive a
Certificate of Sale that will entitle the purchaser to a deed to the real estate
after confirmation of the sale.
The property will NOT be open for inspection and plaintiff makes no
representation as to the condition of the property. Prospective bidders are
admonished to check the court file to verify all information.

If this property is a condominium unit, the purchaser of the unit at
the foreclosure sale, other than a mortgagee, shall pay the assessments and
the legal fees required by The Condominium Property Act, 765 ILCS
605/9(g)(1) and (g)(4). If this property is a condominium unit which is
part of a common interest community, the purchaser of the unit at the
foreclosure sale other than a mortgagee shall pay the assessments required
by The Condominium Property Act, 765 ILCS 605/18.5(g-1).

IF YOU ARE THE MORTGAGOR (HOMEOWNER), YOU HAVE
THE RIGHT TO REMAIN IN POSSESSION FOR 30 DAYS AFTER
ENTRY OF AN ORDER OF POSSESSION, IN ACCORDANCE WITH
SECTION 15-1701(C) OF THE ILLINOIS MORTGAGE FORECLO-
SURE LAW.

You will need a photo identification issued by a government agency
(driver's license, passport, etc.) in order to gain entry into our building
and the foreclosure sale room in Cook County and the same identification
for sales held at other county venues where The Judicial Sales Corpora-
tion conducts foreclosure sales.

For information, The sales clerk, SHAPIRO KREISMAN & ASSOCI-
ATES, LLC Plaintiff's Attorneys, 2121 WAUKEGAN RD., SUITE 301,
Bannockburn, IL, 60015 (847) 291-1717 For information call between the
hours of 1pm - 3pm. Please refer to file number 19-091235.

THE JUDICIAL SALES CORPORATION
One South Wacker Drive, 24th Floor, Chicago, IL 60606-4650 (312)
236-SALE

You can also visit The Judicial Sales Corporation at www.tjsc.com for
a 7 day status report of pending sales.

SHAPIRO KREISMAN & ASSOCIATES, LLC
2121 WAUKEGAN RD., SUITE 301
Bannockburn IL, 60015
847-291-1717
E-Mail: ILNotices@logs.com
Attorney File No. 19-091235
Case Number: 19 CH 100
TJSC#: 39-7881

NOTE: Pursuant to the Fair Debt Collection Practices Act, you are
advised that Plaintiff's attorney is deemed to be a debt collector attempt-
ing to collect a debt and any information obtained will be used for that
purpose.
Published in *The Boone County Journal* Dec 20, 27 Jan 3

IN THE CIRCUIT COURT OF THE
SEVENTEENTH JUDICIAL CIRCUIT
BOONE COUNTY, ILLINOIS
BANK OF AMERICA, N.A., Plaintiff,
-v.- 18 CH 57
JOSEPH M. KRIEGL, LISA J. KRIEGL, Defendant

NOTICE OF SALE
PUBLIC NOTICE IS HEREBY GIVEN that pursuant to a Judgment of
Foreclosure and Sale entered in the above cause on November 20, 2018,
an agent for The Judicial Sales Corporation, will at 1:00 PM on January
16, 2020, at the NLT Title L.L.C, 530 S. State, Suite 201 (Logan Avenue
entrance), Belvidere, IL, 61008, sell at a public sale to the highest bidder,
as set forth below, the following described real estate:

BEGINNING AT AN IRON STAKE IN THE SOUTHWESTER-
LY CORNER OF LOT THREE (3) IN BLOCK FIVE (5) OF ISAAC
MILLER'S ADDITION TO BELVIDERE; THENCE NORTHEASTER-
LY ALONG THE NORTHERLY LINE OF BOONE STREET, NINETY
(90) FEET TO AN IRON STAKE; THENCE NORTHWESTERLY AT A
RIGHT ANGLE WITH SAID STREET LINE, ONE HUNDRED FOR-
TY-EIGHT AND FORTY-FIVE HUNDREDTHS (148.45) FEET TO
AN IRON STAKE; THENCE SOUTHWESTERLY, PARALLEL WITH
SAID STREET LINE, NINETY (90) FEET TO AN IRON STAKE;
THENCE SOUTHEASTERLY, ONE HUNDRED FORTY-EIGHT
AND FORTY-FIVE HUNDREDTHS (148.45) FEET TO THE PLACE
OF BEGINNING. THE ABOVE DESCRIBED PREMISES INCLU-
ED A PART OF BLOCK 71 OF THE ORIGINAL TOWN OF BELVI-
DERE, SITUATED IN THE NORTHEAST QUARTER OF SECTION
26, TOWNSHIP 44 NORTH, RANGE 3 EAST OF THE THIRD PRIN-
CIPAL MERIDIAN, AND PARTS OF LOTS 2 AND 3 IN BLOCK 5
OF ISAAC MILLER'S ADDITION TO BELVIDERE, SITUATED IN
THE SOUTHEAST QUARTER OF SECTION 26; SITUATED IN THE
COUNTY OF BOONE IN THE STATE OF ILLINOIS.

Commonly known as 337 WEST BOONE STREET, BELVIDERE, IL
61008
Property Index No. 05-26-401-008
The real estate is improved with a single family residence.
The judgment amount was \$142,675.98.

Sale terms: 25% down of the highest bid by certified funds at the close
of the sale payable to The Judicial Sales Corporation. No third party
checks will be accepted. The balance, including the Judicial Sale fee for
the Abandoned Residential Property Municipality Relief Fund, which is
calculated on residential real estate at the rate of \$1 for each \$1,000 or
fraction thereof of the amount paid by the purchaser not to exceed \$300,
in certified funds/or wire transfer, is due within twenty-four (24) hours.
No fee shall be paid by the mortgagee acquiring the residential real estate
pursuant to its credit bid at the sale or by any mortgagee, judgment creditor,
or other lienor acquiring the residential real estate whose rights in and
to the residential real estate arose prior to the sale. The subject property is
subject to general real estate taxes, special assessments, or special taxes
levied against said real estate and is offered for sale without any repre-
sentation as to quality or quantity of title and without recourse to Plaintiff
and in "AS IS" condition. The sale is further subject to confirmation by
the court.

Upon payment in full of the amount bid, the purchaser will receive a
Certificate of Sale that will entitle the purchaser to a deed to the real estate
after confirmation of the sale.
The property will NOT be open for inspection and plaintiff makes no
representation as to the condition of the property. Prospective bidders are
admonished to check the court file to verify all information.

If this property is a condominium unit, the purchaser of the unit at
the foreclosure sale, other than a mortgagee, shall pay the assessments and
the legal fees required by The Condominium Property Act, 765 ILCS
605/9(g)(1) and (g)(4). If this property is a condominium unit which is
part of a common interest community, the purchaser of the unit at the
foreclosure sale other than a mortgagee shall pay the assessments required
by The Condominium Property Act, 765 ILCS 605/18.5(g-1).

IF YOU ARE THE MORTGAGOR (HOMEOWNER), YOU HAVE
THE RIGHT TO REMAIN IN POSSESSION FOR 30 DAYS AFTER
ENTRY OF AN ORDER OF POSSESSION, IN ACCORDANCE WITH
SECTION 15-1701(C) OF THE ILLINOIS MORTGAGE FORECLO-
SURE LAW.

You will need a photo identification issued by a government agency
(driver's license, passport, etc.) in order to gain entry into our building
and the foreclosure sale room in Cook County and the same identification
for sales held at other county venues where The Judicial Sales Corpora-
tion conducts foreclosure sales.

For information, The sales clerk, SHAPIRO KREISMAN & ASSOCI-
ATES, LLC Plaintiff's Attorneys, 2121 WAUKEGAN RD., SUITE 301,

Bannockburn, IL, 60015 (847) 291-1717 For information call between the hours of 1pm - 3pm. Please refer to file number 18-086575.

THE JUDICIAL SALES CORPORATION
One South Wacker Drive, 24th Floor, Chicago, IL 60606-4650 (312) 236-SALE

You can also visit The Judicial Sales Corporation at www.tjsc.com for a 7 day status report of pending sales.

SHAPIRO KREISMAN & ASSOCIATES, LLC
2121 WAUKEGAN RD., SUITE 301
Bannockburn IL, 60015
847-291-1717
E-Mail: ILNotices@logs.com
Attorney File No. 18-086575
Case Number: 18 CH 57
TJSC#: 39-7879

NOTE: Pursuant to the Fair Debt Collection Practices Act, you are advised that Plaintiff's attorney is deemed to be a debt collector attempting to collect a debt and any information obtained will be used for that purpose.

Published in *The Boone County Journal* Dec 20, 27 Jan 3

IN THE CIRCUIT COURT OF THE SEVENTEENTH JUDICIAL CIRCUIT COUNTY OF BOONE, STATE OF ILLINOIS
AMERIHOM MORTGAGE COMPANY, LLC, Plaintiff(s),
vs. 19 CH 137
LYRISSA CEDILLO, MARIO J. CEDILLO, UNKNOWN OWNERS AND NON-RECORD CLAIMANTS, Defendant(s).

PUBLICATION NOTICE

The requisite Affidavit for Publication having been filed, notice is hereby given to you: MARIO J. CEDILLO, NONRECORD CLAIMANTS, UNKNOWN TENANTS and UNKNOWN OWNERS, Defendants in the above entitled suit, that said suit has been commenced in the Circuit Court of Boone County, Chancery Division, by the said Plaintiff, against you and other Defendants, praying for foreclosure of a certain Real Estate Mortgage conveying the premises described as follows, to wit:

LOT EIGHT (8) AS DESIGNATED UPON PLAT NO. 1 OF WYCLIFFE, BEING A SUBDIVISION OF PART OF THE SOUTHWEST QUARTER (1/4) OF SECTION 30, TOWNSHIP 44 NORTH, RANGE 4 EAST OF THE THIRD PRINCIPAL MERIDIAN, BELVIDERE, ILLINOIS, ACCORDING TO THE PLAT THEREOF RECORDED IN PLAT INDEX FILE ENVELOPE 145-A, AS DOCUMENT NO. 94-9022, IN THE RECORDER'S OFFICE OF BOONE COUNTY, ILLINOIS; SITUATED IN THE COUNTY OF BOONE AND THE STATE OF ILLINOIS.

Tax Number: 06-30-352-002

commonly known as 521 CALGARY WAY BELVIDERE IL 61008; and which said Real Estate Mortgage was made by LYRISSA CEDILLO AND MARIO J. CEDILLO, and recorded in the Office of the Boone County Recorder as Document Number 2017R02608; that Summons was duly issued out of the said Court against you as provided by law, and that the said suit is now pending.

Now, therefore, unless you, the said named Defendant, file your answer to the Complaint in the said suit or otherwise make your appearance therein, in the office of the Circuit Court of Boone County, located at 601 N MAIN ST, BELVIDERE, IL 61008, on or before January 21, 2020, default may be entered against you at any time after that day and a judgment entered in accordance with the prayer of said Complaint.

LAW OFFICES OF IRA T. NEVEL, LLC

Attorney for Plaintiff

Ira T. Nevel - ARDC #6185808
Timothy R. Yueill - ARDC #6192172
Greg Elsnic - ARDC #6242847
Aaron Nevel - ARDC #6322724
Joseph Baldwin - ARDC #6323598
Danielle Alvarez - ARDC #6325510
175 North Franklin St. Suite 201
Chicago, Illinois 60606
(312) 357-1125
Pleadings@nevellaw.com
KP
19-04895
I3140571

Published in *The Boone County Journal* Dec 20, 27 Jan 3

LEGAL NOTICES

Public Notices

IN THE CIRCUIT COURT OF THE SEVENTEENTH JUDICIAL CIRCUIT BOONE COUNTY, ILLINOIS
PUBLICATION NOTICE No. 17-JA-04

In The Interest of: Logan Gorzela, Minor
To: Gary Gorzela/ To whom it may concern Respondent
ALL WHOM IT MAY CONCERN:

Take notice that on February 23, 2017, a petition was filed under the JUVENILE COURT ACT by Atty. Tricia Smith, State's Attorney, 601 North Main Street, Belvidere, Illinois 61008, in the Circuit Court of Boone County entitled " In the Interest of Logan Gorzela, minor; and that in the County Courthouse in Belvidere, Illinois, at 1:30 P.M. central Daylight time on 01-30-20; or as soon thereafter as this cause may be heard, an adjudicatory hearing will be held upon the petition to have the child declared to be a ward of the Court under that Act. THE COURT HAS AUTHORITY IN THIS PROCEEDING TO TAKE FROM YOU THE CUSTODY AND GUARDIANSHIP OF THE MINOR, TO TERMINATE YOUR PARENTAL RIGHTS, AND TO APPOINT A GUARDIAN WITH POWER TO CONSENT TO ADOPTION. YOU MAY LOSE ALL PARENTAL RIGHTS TO YOUR CHILD. IF THE PETITION REQUESTS THE TERMINATION OF YOUR PARENTAL RIGHTS AND THE APPOINTMENT OF A GUARDIAN WITH THE POWER TO CONSENT TO ADOPTION YOU MAY LOSE ALL PARENTAL RIGHTS TO THE CHILD. Unless you appear you will not be entitled to further written notices or publication notices of the proceedings in this case, including the filing of an amended petition or a motion to terminate parental rights.

Now, unless you appear at the hearing and show cause against the petition, the allegations of the petition may stand admitted as against you and each of you, and an order of judgment entered.

Dated December 11, 2019

Linda J. Anderson, Circuit Clerk

By: Heather Austin Deputy Clerk

Published in *The Boone County Journal* 12/20,27 01/03-c

IN THE CIRCUIT COURT OF THE SEVENTEENTH JUDICIAL CIRCUIT BOONE COUNTY, ILLINOIS
PUBLICATION NOTICE No. 19-JA-26

In The Interest of: Javier Martinez, Minor
To: Logan Wentz/ To whom it may concern Respondent
ALL WHOM IT MAY CONCERN:

Take notice that on November 18, 2019 a petition was filed under the JUVENILE COURT ACT by Atty. Tricia Smith, State's Attorney, 601 North Main Street, Belvidere, Illinois 61008, in the Circuit Court of Boone County entitled " In the Interest of Javier Martinez, minor; and that in the County Courthouse in Belvidere, Illinois, at 1:30 P.M. central Daylight time on 01-16-20 & 02-20-20; or as soon thereafter as this cause may be heard, an adjudicatory hearing will be held upon the petition to have the child declared to be a ward of the Court under that Act. THE COURT HAS AUTHORITY IN THIS PROCEEDING

TO TAKE FROM YOU THE CUSTODY AND GUARDIANSHIP OF THE MINOR, TO TERMINATE YOUR PARENTAL RIGHTS, AND TO APPOINT A GUARDIAN WITH POWER TO CONSENT TO ADOPTION. YOU MAY LOSE ALL PARENTAL RIGHTS TO YOUR CHILD. IF THE PETITION REQUESTS THE TERMINATION OF YOUR PARENTAL RIGHTS AND THE APPOINTMENT OF A GUARDIAN WITH THE POWER TO CONSENT TO ADOPTION YOU MAY LOSE ALL PARENTAL RIGHTS TO THE CHILD. Unless you appear you will not be entitled to further written notices or publication notices of the proceedings in this case, including the filing of an amended petition or a motion to terminate parental rights.

Now, unless you appear at the hearing and show cause against the petition, the allegations of the petition may stand admitted as against you and each of you, and an order of judgment entered.

Dated December 11, 2019

Linda J. Anderson, Circuit Clerk

By: Heather Austin Deputy Clerk

Published in *The Boone County Journal* 12/20,27 01/03-c

STATE OF ILLINOIS
IN THE CIRCUIT COURT OF THE SEVENTEENTH JUDICIAL CIRCUIT BOONE COUNTY

Irasema Barraza, Plaintiff

Vs Case No. 2019-D-75

Pablo Barraza, Defendant

NOTICE OF PUBLICATION

Notice is given you, Pablo Barraza, Defendant that this cause has been commenced against you in this Court asking for Dissolution of Marriage and other relief.

Unless you file your response or otherwise file your appearance in this cause in the office of the Circuit Clerk of Boone County, Boone County Courthouse, 601 N. Main St., Belvidere, Illinois, 61008 on or before the 22nd day of January, 2020, a Judgment or other relief as prayed for by the Plaintiff may be granted.

Dated: 12/17/19

Linda J. Anderson

Clerk of the Circuit Court

17th Judicial Circuit

Boone County, Illinois

Published in *The Boone County Journal* 12/20,27 01/03

Assumed Names

ASSUMED NAME CERTIFICATE OF INTENTION

State of Illinois County of Boone) ss This is to certify that the undersigned intend...to conduct and transact a Mobile Mechanic, I come to your car and repair business in said County and State under the name of 1st Choice Mechanic at the following addresses 1204 Oakley Street, Belvidere IL, 61008 and that the true and real full names of all persons owning, conducting or transacting such business, with the respective residence address of each, are as follows: NAME AND ADDRESS OF RESIDENCE: Alex Robertson, 1204 Oakley Street, Belvidere IL, 61008. Signed: Alex Robertson 12/27/19

Subscribed and sworn (or affirmed) to before me, this 27th day of December, 2019.

Julie A. Stapler, County Clerk, by Giselle Lenover, Deputy

Published in *The Boone County Journal* 01/03,10,17

ASSUMED NAME CERTIFICATE OF INTENTION

State of Illinois County of Boone) ss This is to certify that the undersigned intend...to conduct and transact a Sole Proprietor business in said County and State under the name of Wyle E. Raceway at the following addresses 5934 Shattuck Road, Belvidere IL, 61008 and that the true and real full names of all persons owning, conducting or transacting such business, with the respective residence address of each, are as follows: NAME AND ADDRESS OF RESIDENCE: Billy J. McCoy, 503 Douglas Street, Belvidere IL, 61008. Signed: Billy J. McCoy 12/27/19

Subscribed and sworn (or affirmed) to before me, this 27th day of December, 2019.

Julie A. Stapler, County Clerk, by Erica Bluege, Deputy

Published in *The Boone County Journal* 01/03,10,17

ASSUMED NAME CERTIFICATE OF INTENTION

State of Illinois County of Boone) ss This is to certify that the undersigned intend...to conduct and transact a Cleaning Service business in said County and State under the name of Mop 'N Go Cleaning Service at the following addresses 1005 S. Main Street, Belvidere IL, 61008 and that the true and real full names of all persons owning, conducting or transacting such business, with the respective residence address of each, are as follows: NAME AND ADDRESS OF RESIDENCE: Ashley M. Vanover, 1005 S. Main Street, Belvidere IL, 61008. Signed: Ashley M. Vanover 12/30/19

Subscribed and sworn (or affirmed) to before me, this 30th day of December, 2019.

Julie A. Stapler, County Clerk, by Giselle Lenover, Deputy

Published in *The Boone County Journal* 01/03,10,17



A Public Notice is an important tool in assuring an informed citizenry; a conduit of information from the government to the public. Notices are mandated by legislatures to make sure there is a public window into the activities of governments, officers of the court and others holding a public trust. Among the most common types of public notices are: hearings, government budgets, notices of contract bids, foreclosures, probate notices, adoptions, and dissolution of marriages, name changes and assumed business names. There are four key elements to a public notice:

- Independent:** A public notice is published in a forum independent of the government, typically in a local newspaper.
- Archivable:** A public notice is archived in a secure and publicly available format.
- Accessible:** A public notice is capable of being accessed by all segments of society.
- Verifiable:** The public and the source of the notice can verify the notice was published, usually by an affidavit provided by the publisher.

Enabling an informed citizenry through newspaper public notices helped America to develop participatory democracy where it counts: where money is spent, policy is made and futures charted. Public notices by government and private parties are so tightly woven into the American fabric that many citizens may take them for granted. Located in easily found sections of the newspapers, public notices reach out to interested readers, leading them to opportunities. Voices are expressed on taxation, communities are formed around planned public improvements, and assets are saved from loss to unworthy creditors – all as a result of public notices.

Public Notice Network

Interested in Boone County?

Don't Miss the News

The Boone County Journal

ONLINE \$12.99 A YEAR

Includes Searchable Archive

www.boonecountyjournal.com

New Laws *Continued from page 3*

Public locations must change exterior signage as well.

– Public buildings will be required to have baby changing facilities in any of their public restrooms.

– The burial benefit for a firefighter, state police or local law enforcement officer killed in the line of duty will increase to \$20,000 from \$10,000.

– The Illinois secretary of state will be required to allow applicants to choose between “male,” “female” or “nonbinary” when designating the applicant’s sex on their driver’s license or ID card.

– Any report received by the Department of Children and Family Services alleging the abuse or neglect of a child by a person who is not the child’s parent or immediate family must immediately be referred to the appropriate local enforcement agency and state’s attorney for consideration of criminal investigation or other action.

– Diesel trucks will be prohibited from idling for more than 10 minutes within one hour if the vehicle is within 200 feet of a residential area.

– Graduate assistants will no longer be classified as “students,” but rather as “employees,” which grants them the right to collectively bargain.

– Insurers in the state will be required to cover the costs of medically necessary epinephrine injectors, commonly referred to by the brand name EpiPen, for persons under 18 years old.

– Hospitals must post information on how to enroll in health insurance through the Illinois health insurance marketplace.

The Illinois Senate Democratic and Republican caucuses have each compiled lists of new laws available at their respective websites, illinoisenatedemocrats.com and senategop.state.il.us.

Innovation Tuesday @ NIU EIGERlab

NIU EIGERlab welcomes Reinhart Boerner Van Deuren P.C. as Innovation Tuesday and FastPitch sponsor Rockford, Ill. — Reinhart Boerner Van Deuren P.C. has partnered with NIU EIGERlab to sponsor its

long-standing meetup event, Innovation Tuesday. In the course of a year, more than 300 innovators and entrepreneurs network, discuss and learn about topics of mutual interest at these monthly events. Innovation Tuesday meetups take place at NIU-Rockford on the second Tuesday of the month, January through November, excluding August.

“In working with inventors around the world, we see a common thread - the willingness to take a chance that their spark of innovation can change the world for the better,” shared Jeff Makeever, Reinhart Chairman - Intellectual Property Law. “However, this experience has shown us that the spark is fragile and difficult to see at the outset for many. We became involved with NIU EIGERlab and the Innovation Tuesday Meetup because this program and the personnel at NIU EIGERlab are experts at helping its participants find their spark, and we want to be a part of that.”

Innovation Tuesday covers a variety of topics of interest to innovators, entrepreneurs and small business owners. This can include everything from the effective use of social media as a marketing tool to patent protection. The first program of 2020 is “Invest in your Company by Protecting It! Insurance Tips for Entrepreneurs” and will be held January 14, 5:30 to 7:30 p.m. All events are held in the NIU EIGERlab Coworking Space at NIU-Rockford, 8500 East State Street.

“We are delighted to welcome Reinhart back as our 2020 Innovation Tuesday sponsor,” said Rena Cotsones, Ph.D., NIU Associate Vice President for Outreach, Engagement and Regional Development.

“The Rockford area’s innovation ecosystem is enhanced by consistent networking and information-sharing among like-minded individuals. Reinhart’s generous support will help sustain and improve this high-value activity through regular meetups. We also appreciate their support of our annual FastPitch event, which will be held September 30, 2020.”

Innovation Tuesday is an informal, discussion-based event which allows plenty of time for attendees

to interact with speakers and other like-minded individuals. With networking occurring both before and after the presentations, there’s plenty of time for participants to meet potential partners, clients or simply sources of insightful advice. A light dinner is served.

To learn more about Innovation Tuesday and register for an upcoming event, visit our website Events page, www.eigerlab.org/events/ or phone Tina Leombruni at (815) 965-3522

BOONE COUNTY LICENSE & TITLE

What WE Can Do For YOU!

Illinois License Plates & Stickers for

- Cars • Trucks • Motorcycles •
- Trailers • Boat Trailers •
- Notary Public • Map Books •



Ask us for details about our over the counter Plates and Sticker service.

- License & Title Services
- Plates, Stickers & Renewals
(Get sticker same day)
- Flat Fee for Services
- No Long Lines
- Friendly Helpful Staff
- Fast Convenient Service

Open 6 Days a Week
Monday thru Friday

9 am to 5 pm
Saturday
9 am to 1 pm

Located on State Street
at the **Journal**
419 S. State Street
Belvidere, IL 61008

(815) 544-2075